

From time-to-time, Asatte Press releases updates to correct typos and other minor problems reported by readers. Our book *Simple SysML for Beginners: Using Sparx Enterprise Architect* was updated to Version 1.0.2 on 9 July 2022

This errata sheet documents substantive corrections to Version 1.0.1 that were included in Version 1.0.2 as well as previous corrections that were included in Version 1.0.1.

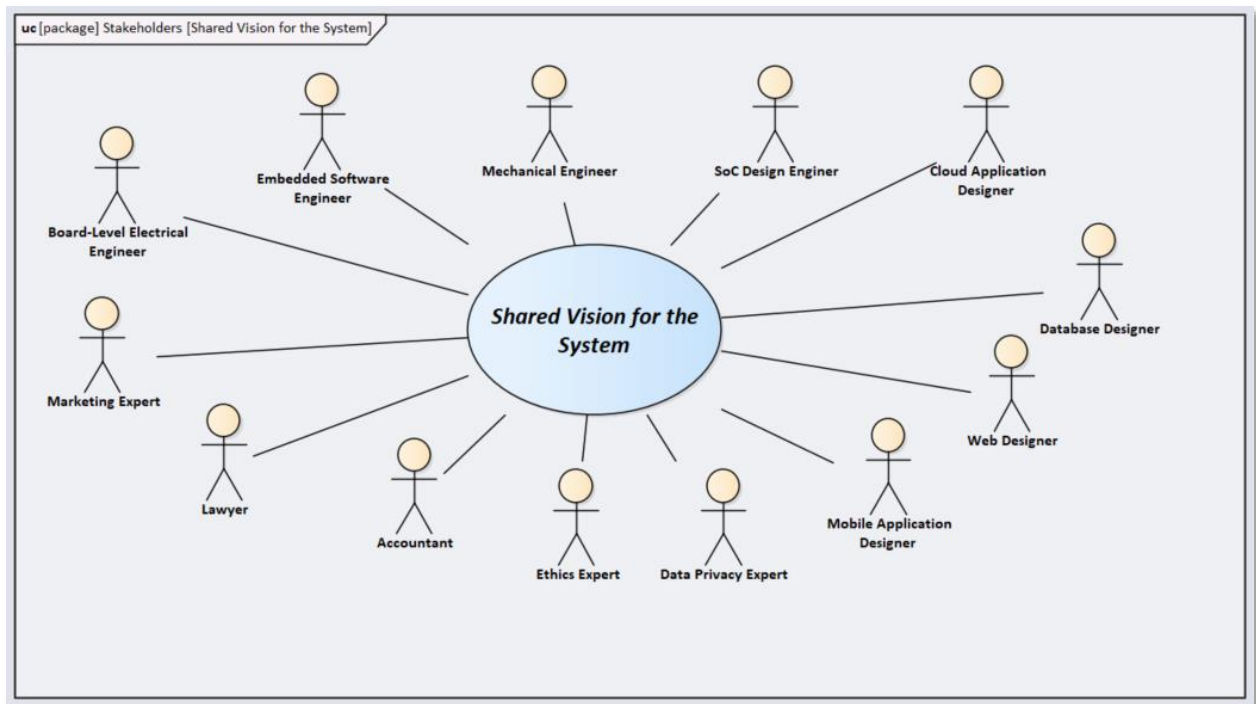
You can find the version number of your book on the copyright page. (The version is also shown on the rear cover of the print edition. However, some copies of the Version 1.0.1 erroneously show Version 1.0.0 on the rear cover.)

Corrections to Version 1.0.1 included in Version 1.0.2

Page 2 Typo

“fascinating” instead of “fascinatingly”

Page 56 Figure 3-5



“Single Version of the Truth” has been changed to “Shared Vision for the System”. This change represents the evolving understanding of the MBSE community about the role of the system model. Originally, the ambition was for the model to be the “Single Version of the Truth”. However, the community understanding of the problem has evolved to recognize that the “Authoritative Source of the Truth” (ASoT) will be a configuration-managed collection of data spanning several systems. “Shared Vision of for the System” more accurately represents the role of the SysML model.

Page 93 Typo

“reference” instead of “refernce”

Page 99 Procedure for Version 15.2

Clarified the steps to display the properties window that is new in version 15 of the tool.

Page 132 Typo

“proxy ports” instead of “proxy parts”

Page 207 Caption for Figure 7-32

The caption for the figure should read: “Name the object”

Page 227 Rewrite Procedure to Accommodate Enterprise Architect 15.2

Sparx Systems radically altered the behavior of actors between version 14 and version 15.2, no longer allowing actors to be part of reference associations, but still allowing them as properties on a block. The procedure in this section was updated to work with version 15.2

Page 232 Incorrect Figure Name

Should be “Figure 8-5 – Name the signal”

Page 245 Terminology Correction (page 244 in v1.0.2)

“user” instead of “visitor”

Page 311 Clarifying Footnote

Added a footnote clarifying the limited scope of a “Single Version of the Truth” requirements diagram.

Page 312 Spelling Error in Figure 11-1

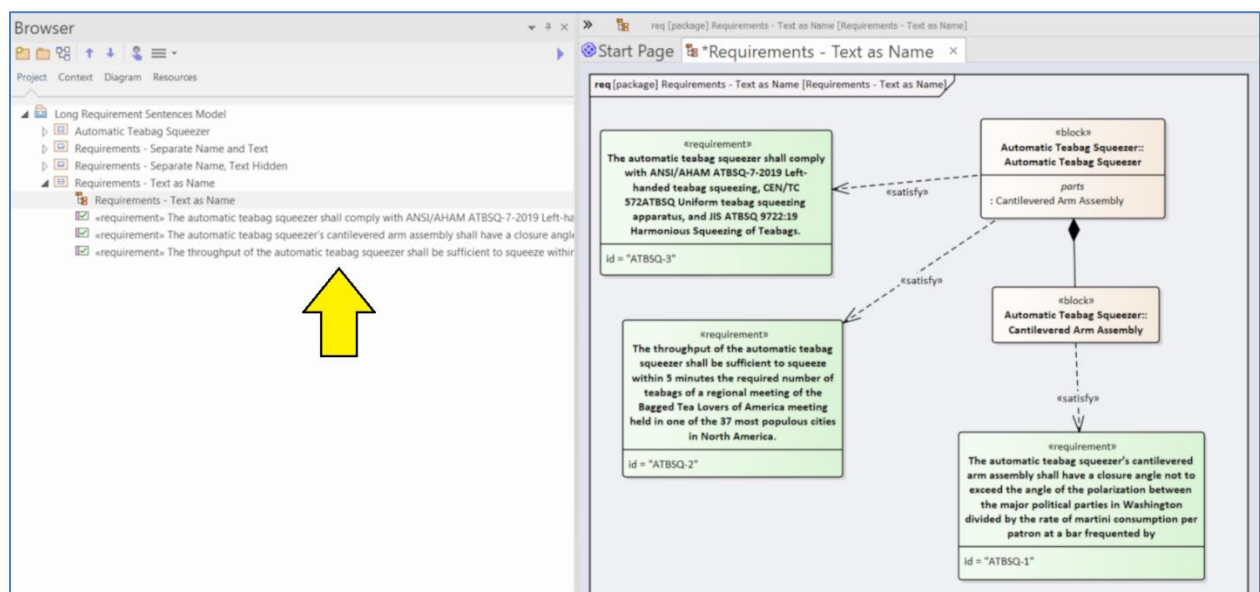
The weight of the car should be “1000 kilograms”

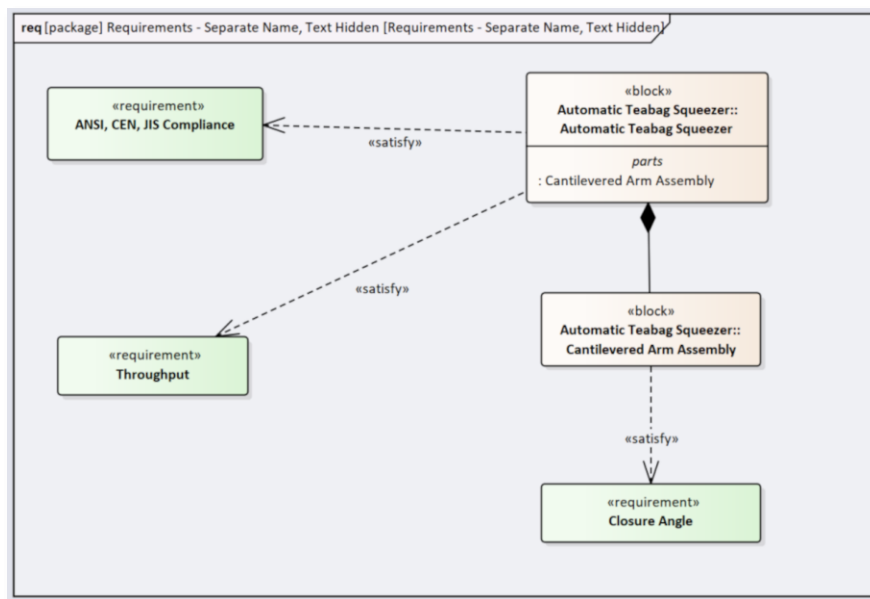
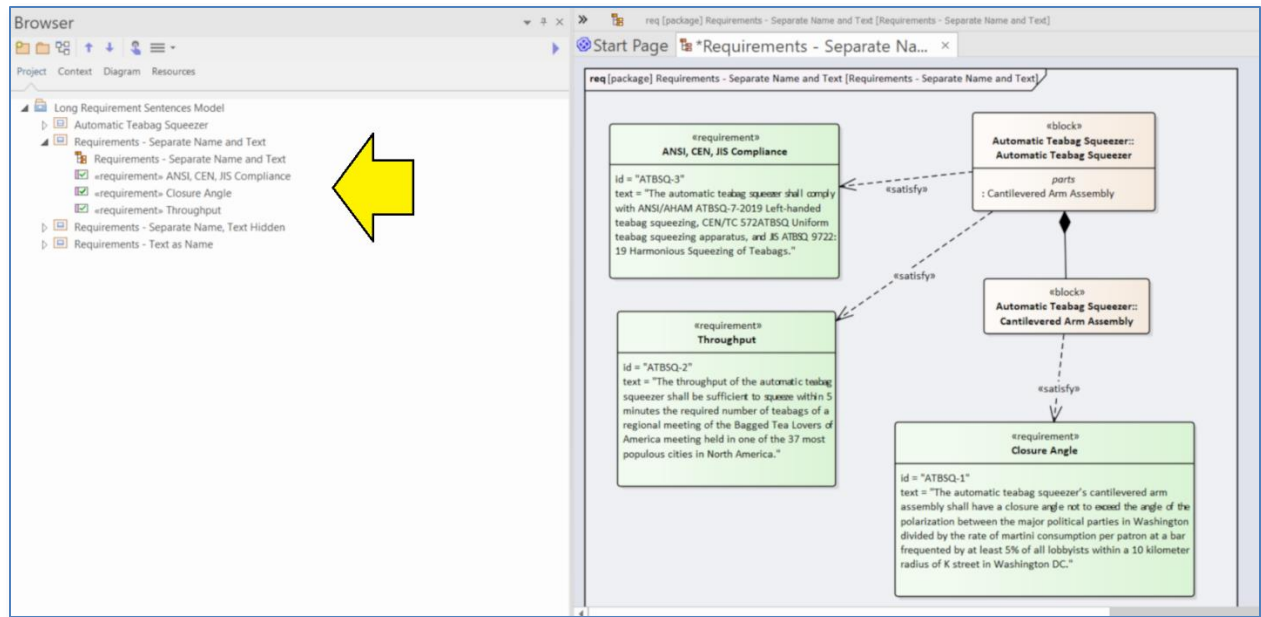
Page 313 Typo

Redundant use of the word “if”.

Page 314 Arrows in the Wrong Direction

In figures 11-3, 11-4, and 11-5, the satisfy arrows should run from block to requirements.



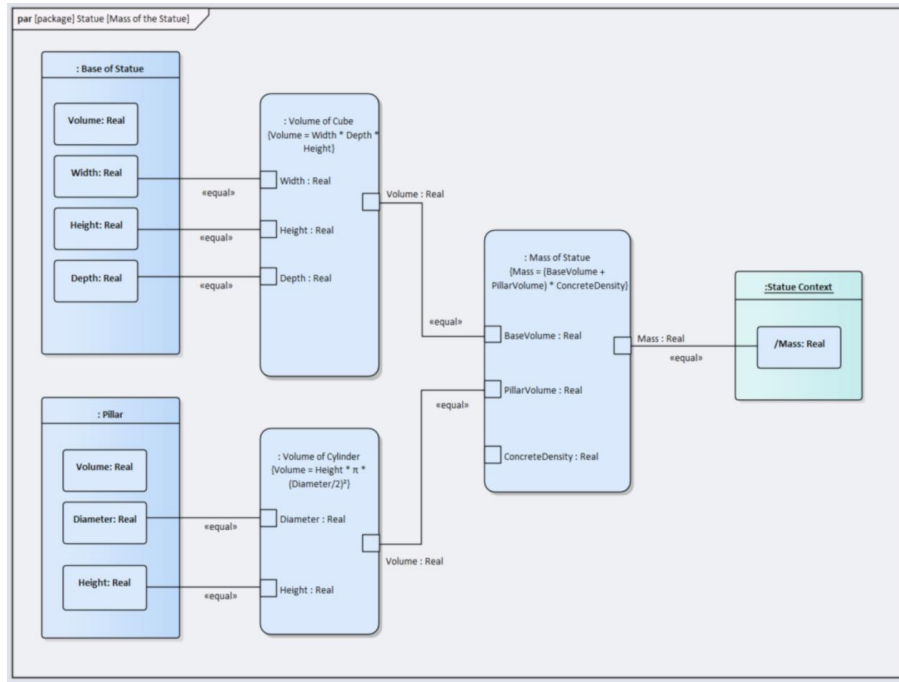


Page 317 Typo

Capitalization of the word “Is”.

Page 338 Name of the Diagram

The name of the parametric diagram shown in Figure 12-21 should be “Mass of the Statue”



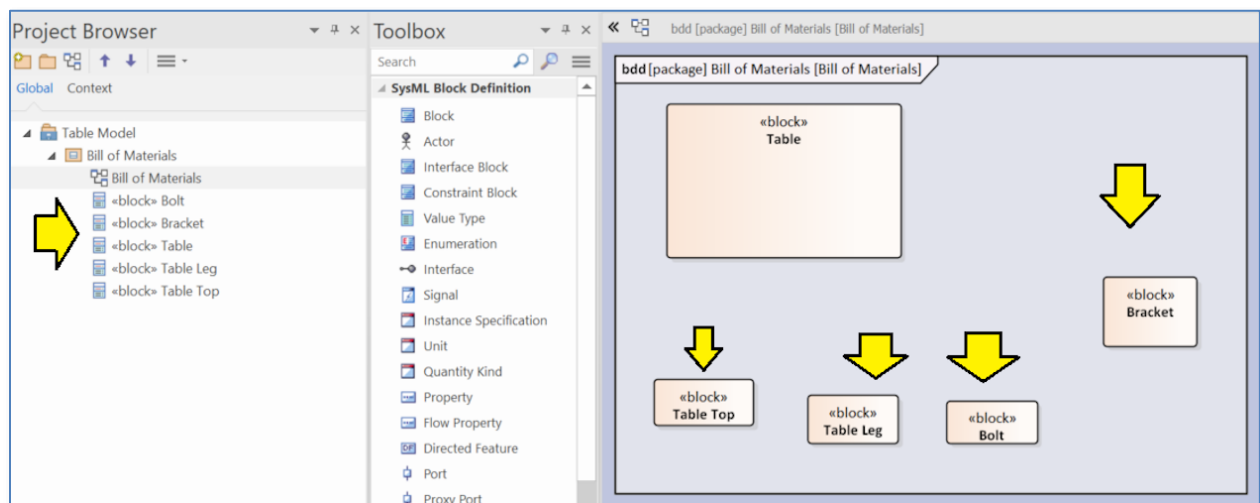
Page 367 Typo

“in your model” instead of “in your requirements”

Previous Corrections to Version 1.0.0 included in Version 1.0.1

Page 74 Parts Should be Singular

The original version of *Figure 4-7* showed blocks with plural names such as “Brackets”. In general, plural nouns should be avoided as the interaction with the SysML multiplicity feature will be confusing. What would “Brackets” with a multiplicity of “8” actually mean? The corrected figure looks like this:



Page 121 One Arrow or Two?

The tool defaults to showing only one composition arrow even when two are created. This effect is documented in the book. Sparx Support pointed out that there is actually a way to make the tool display multiple arrows. The sidebar was improved to include this information:

One Arrow or Two?

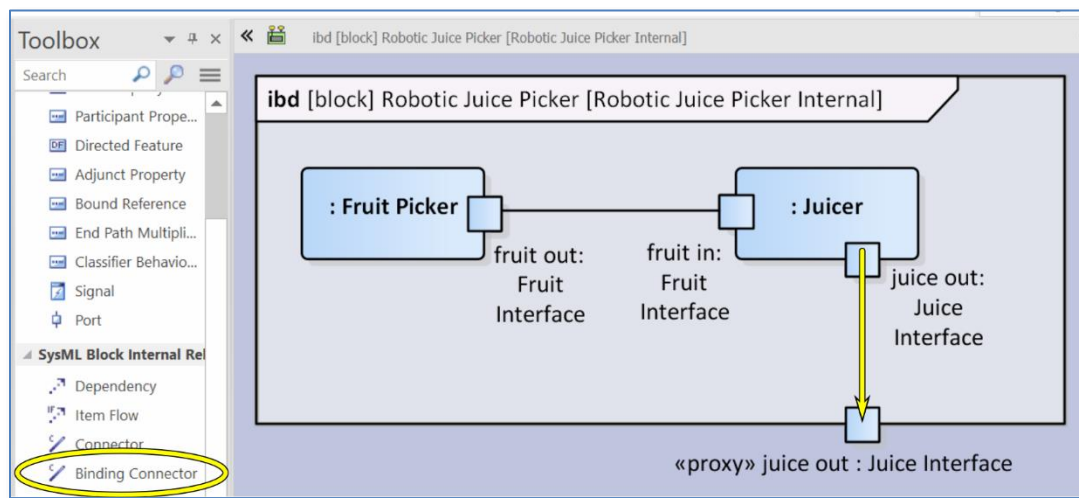
The SysML standard calls for multiple composition arrows when you have multiple parts of the same type with different roles. Strictly speaking, *Enterprise Architect* is out of compliance with the standard on this point. However, I personally found the multiple arrows pretty confusing when I first encountered them. Furthermore, if you need more than two or three distinct parts of the same type, the multiple arrows approach can become unmanageable on the diagram. See:

- [Delligatti] – page 49 Figure 3.20
- [Friedenthal] – page 116 Figure 7.1

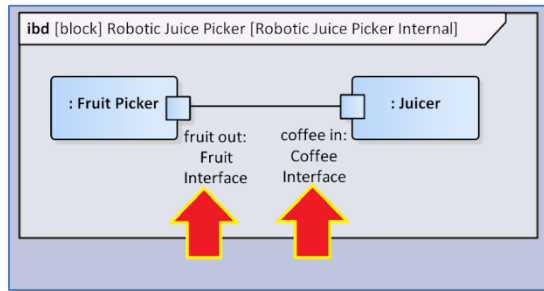
However, if you prefer the standard approach, by right-clicking on the first arrow and selecting: “Line Style” and then “Tree Style - Vertical”, you can get the standard look.

Page 149 Proxy Port Requires Binding Connector

The connection between a proxy port and the internal element it represents should be a “binding connector”. Also, the names of the interface blocks in the example were clarified to make it more obvious that interface blocks type the “interface” and not the stuff flowing across the connector. *Figure 5-50* was corrected:



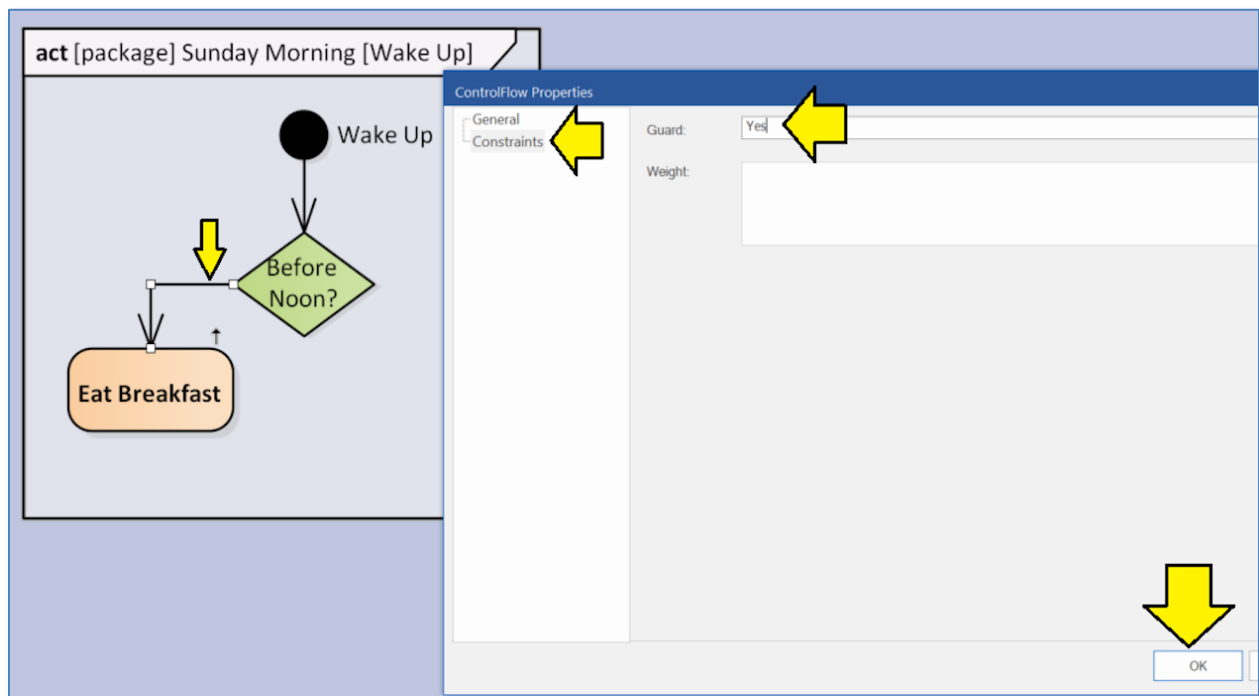
The interface names in *Figure 5-52* were also improved to make it clearer that the example port incompatibility has to do with an interface incompatibility which is subtly different from an incompatibility in what flows across the connector.



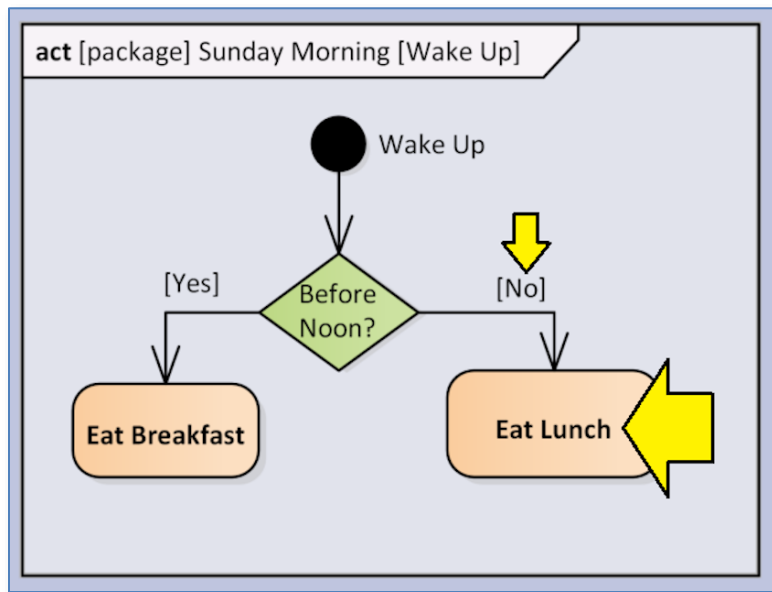
Page 191 Guard Rather Than Name

Control flows coming out of a decision node in an activity should be named (selected) using the “guard” property rather than “name” property of the control flow. This subtle difference will not matter much if you are only making diagrams to illustrate concepts for human readers. However, if you progress to simulation with your model, the difference will matter as simulators look for “guard” conditions, not “name” conditions.

The previous *Figure 7-13* is corrected as follows:



The resulting notation in the diagram is slightly different. The previous *Figure 7-14* is corrected as follows:



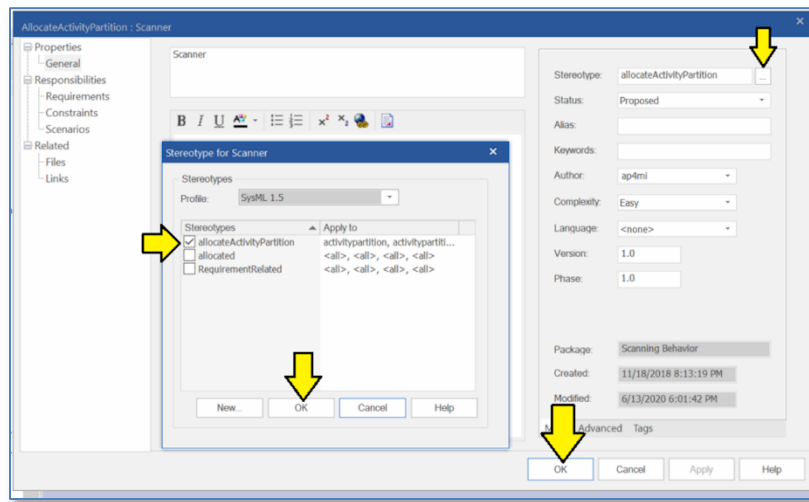
Page 208 Footnote (33) Dashed Line for Control Flow

The previous footnote 33 pointed out that per the SysML standard, a control flow should really be a dashed line. Sparx Support replies that while it is true that Enterprise Architect does not show control flows as dashed lines by default, there is a way to configure the tool to show the control flows as dashed lines. The footnote has been updated:

⁽²⁹⁾ The standard suggests that control flow should be represented with a dashed arrow. *Enterprise Architect* does not show a dashed line by default. However, if you select “Configure” from the top menu bar, select “Options” from the ribbon, and then select the “General” tab, you will find an option to show a dashed line for control flow in a SysML model.

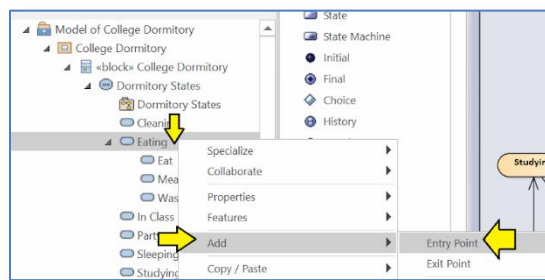
Page 213 Allocating Activity Partition

Sparx Support suggests that partitions in activity diagrams should be given the stereotype “allocateActivityPartition” rather than the stereotype “allocated”.

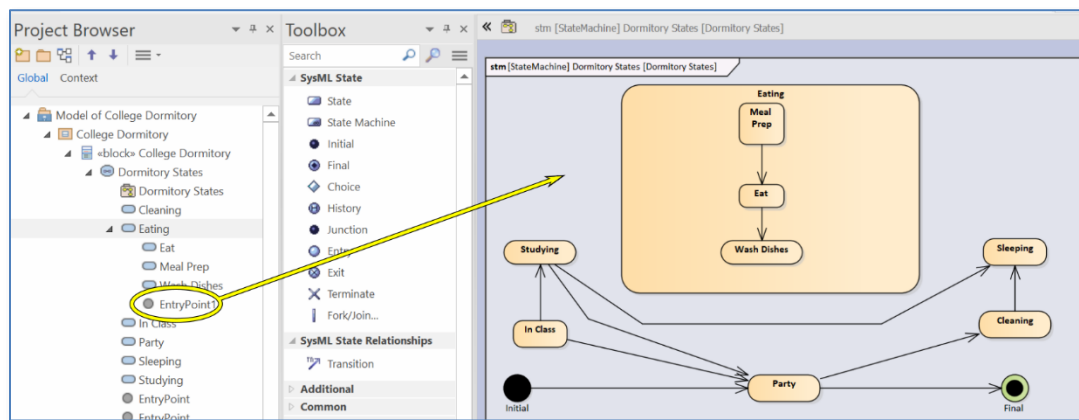


Page 286 Entry and Exit States for Substate

Sparx Support provided a corrected procedure for putting entry and exit points on a substate. (The Entry and Exit icons in the toolbox are for the main state, not for substates).



First, create the entry point (exit point) in the browser.

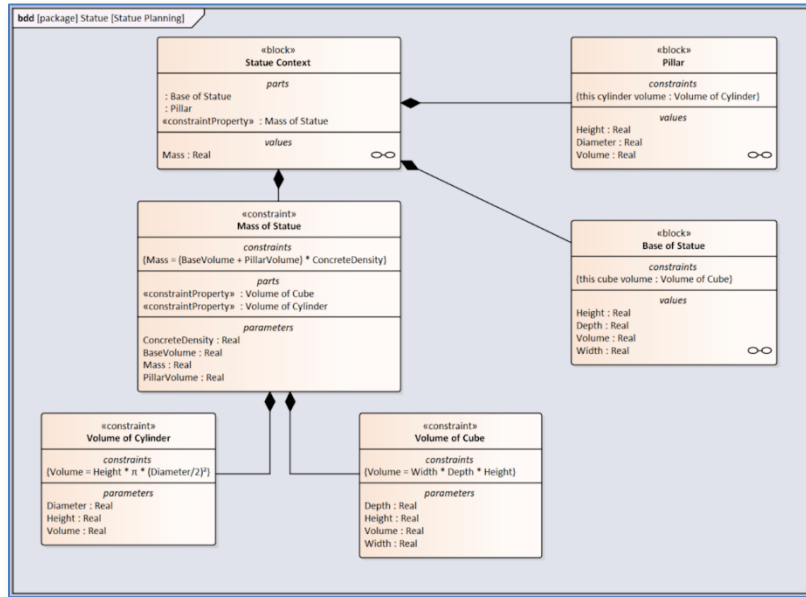


Then, drag the entry point to the diagram. It will snap to the edge of the substate that owns it.

Page 337 Mistake in Constraint Instance Name

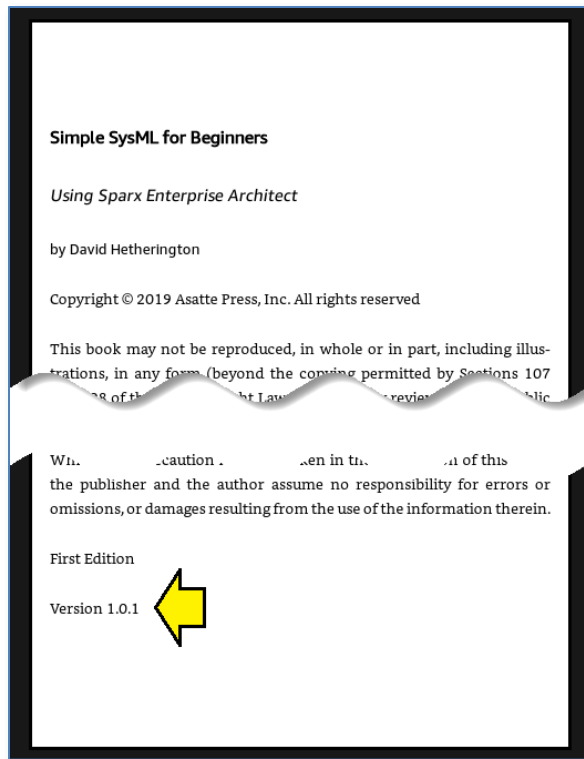
The block "Base of Statue" should have an instance name for its constraint of "this cube volume" rather than "this cylinder volume".

The corrected *Figure 12-20* looks like this:



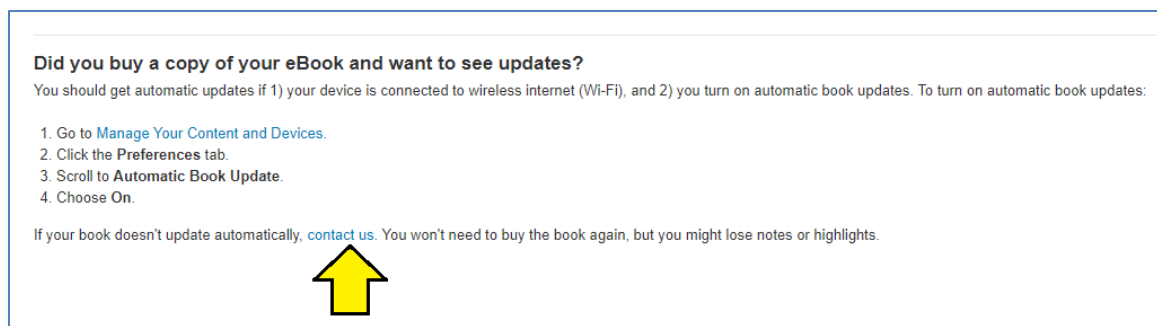
Getting Kindle Book Updates

Asatte Press generally tries to synchronize such maintenance updates so that updated print editions start shipping at the same time the updated Kindle edition becomes available. For both the print edition and the Kindle edition, the current version can be confirmed on the copyright page.



Amazon's policy on updating existing customers to new versions of previously purchased books is a little confused. The official policy is available here:

https://kdp.amazon.com/en_US/help/topic/G200966010



From the text in the webpage, it might seem like you can set your device to receive automatic updates. In the experience of Asatte Press, such automatic updates are **not** in fact delivered, regardless of device settings. However, other Kindle customers on the internet report that if you call Amazon (yellow arrow above) they will manually push a book update to your device for you.

Downloading Corrected Example Files

The example files for the book have been updated to Version 1.0.2 and contain all of the fixes mentioned in this document. Existing book owners can download the corrected example files following the (unchanged) instructions in Versions 1.0.0 and 1.0.1 of the book.